




Welcome

Please read these following pages thoroughly as they contain useful information about our venue. If you should have any additional questions, please don't hesitate to write or call.

V. 1.3

Address:

Musikhuset Posten
Østre Stationsvej 35
DK-5000 Odense C.
 +45 66 136 020

Booking/management:

Morten Østlund



+45 61 621 495

morten@postenlive.dk

Production/Catering/hospitality:

Claus Borchsenius



+45 61 621 494

claus@postenlive.dk

Production/Tech/sound & light:

Steen Juul Marcker



+45 22 979 606

steen@postenlive.dk

Driving directions:

Coming from east on E20 turn right on exit 50. Continue straight ahead and keep to your right for approx 6 km. At the intersection turn right going straight for approx 500 meters, and then turn right to go behind the venue.

Coming from west on E20 turn left on exit 53. Continue straight ahead on highway 161 for approx 10,2 km. Then keep following the road as it turns left and go straight for approx 1.1 km and then turn left at the intersection to go behind the venue.

Parking and load in:

Parking and load in are placed on the backside of the building

Night liners and busses can easily park alongside the building. Note that it is against the law in Denmark to keep a vehicle on idle for more than one minute. Please let us know well in advance and we will supply with any power needed.

Load in directly on stage – entrance is 1,68 m wide, 2,08 m high and 1,25 m above outside ground.

Larger trucks with hydraulic ramps fit easily. If needed we have a ramp to help load in.

Beware not to park outside our area. You will get a ticket unless you pay the meter!

Dressing rooms and backstage area:

The venue is a closed environment until time of doors.

On the second floor we have three dressing rooms all well equipped with furniture, mirrors, stereo, wireless internet, etc. An ironing board and iron is also available.

We do not tolerate any abuse or vandalism of our inventory.

Note that we have only one shower and one toilet in the backstage area.

A hospitality host will be present during your entire stay with us.

Be sure our production office has all up to date hospitality riders well in advance. If you do not have a specified hospitality rider we need to know any food allergies in your party. Also please let us know well in advance if you need vegetarian or vegan food.

We're committed to make your stay as comfortable and carefree as possible.

Security:

To have access to the backstage area, you'll need a specific ID. This ID will vary from show to show and will be given to you at the time of your arrival. Please notify us well in advance how many ID's you'll need for your entire party. If you carry your own tourID it can be accepted if notice is given in advance to our production office. Any guests to the backstage area must be announced to our production office prior to your arrival. We do not accept sudden invitations to the backstage area.

Emergency:

In case of fire please seek to the exit nearest you marked with a lit "EXIT" sign. Also carefully follow any instructions given to you by our staff.

At least one member of our staff, trained in given first aid, will be present during your stay. First aid kits are placed in strategic places. If you need information of the whereabouts of these or names of first aid trained personnel, please contact our production office or the host on the day.

In need of ambulance, police, or fire department call: **112**

The Venue:

Our venue has two stages. The main stage has a capacity of 800 and the small stage 300. We have three bars where two are located inside the venue and a large one is located in the lobby. Restrooms are located in the lobby and at the entrance. The venue is under constant video surveillance. The stages however are not being recorded.

The venue is a non smoking venue.

**Time schedule:**

Please inform us of any time schedule well in advance. Important information like setup, soundcheck, dinner, etc. are crucial in order for us to run things smoothly and effectively for you and your production. In case of any trouble getting here in time, vehicle breakdown, etc. (force majeure), please notify us at once. We do not accept any change in load in time after 10 days prior to your arrival.

Merchandise:

Inside the venue there is a small stand free for you to use for sale of merchandise. It's possible to hang shirts, etc. We do not supply staff for this.

Load out and curfew:

After show please allow at least 75% of the audience to leave the venue before turning on the work lights on stage. We wish to give the audience a chance to finish their drinks, and leave the mystique around the stage and performance intact for as long as possible. In our mind it makes the audience hungry for more.

Staff:

Most of our staff will not be present for you as they work to serve the audience.

At your arrival you will be presented to a few key figures that will delegate tasks at hand.

All of our staff is very friendly, English speaking and eager to help you, so please extend this courtesy and be friendly towards them.

Safety precautions:

To prevent personal injury and/or damage to equipment you must respect instructions given by either our manager or technicians. Our staff will not be allowed to do any work that could put them in any danger.

Tech specs:

These specs represent the main stage. For specs on the small stage please contact our production office. Also please make sure our production office have all necessary up to date technical riders well in advance.



PA:

Left: Three L'Acoustics "ARCS" and four L'Acoustics SB 118

Right: Three L'Acoustics "ARCS" and four L'Acoustics SB 118

Delay: Two RCF C3108

All powered by LAB and Crown amplifiers.

Controlled with a Dolby Lake processor and a Klark DN 370 equalizer.

Desk:

Midas Heritage 1000 – 40+4 channels, 10 groups, 10 auxs, 10 VCA

Effects:

TC electronics M 2000

TC electronics M 3000

Yamaha REV 500 multi effects unit

TC electronics TC 2290

Dynamics:

DBX 1046 Quad Compressor

DBX 160 SL Stereo Compressor

6 x DBX 160A Compressor

1 x Klark "square one" Dynamics – 8 x compressor/gate

Misc.:

Tascam CD-01U CD player

Monitor:

Monitor is done from FOH. Split for separate monitor is available.

Monitor equalizers is an 8 channel TC Electronic EQ Station (without fader option)

Amps are Musictronic MPA 8800 and MPA 6800 (total of 8 channels)

Please let us know well in advance if you are touring with your own monitor production.

Monitor speakers:

4 x Musictronic BR 122 bi amped wedge (1x12" + 1x2")

6 x Musictronic BR 152 bi amped wedge (1x15" + 1x2")

1 x Musictronic BR 252 bi amped wedge (2x15" + 1x2")

Assortment of Shure, RØDE, Sennheiser, AKG mics. LG and S.C. Sound Linedrivers

All necessary cables, stands etc.

Note that we do not have any recording equipment such as tape recorder, MD, DAT, Multitrackers, etc.

Light:

We have four DMX lines available, two three pins and two five pins.

Codes:

1 - 12 house light

13 – 96 dimmers on stage

100 – 255 movingheads

400 – 415 Atomics strobes

Desk:

Avolites Pearl 2000

Dimmers:

7 x ETC "smartpack" – 12 x 1,2kW each.

1 x 12 ch. Lighttec SP 112 for audience lighting (fixed).

Flying:

Litec QX 30 square truss. Maximum load 80 kg/m uniformly distributed.

We got four trusses: two above the stage, and two above the audience.

Luminaries:

40 x DTS PAR 64, 1 kW (4 is placed vertically in each side of the stage)

8 x Thomas PAR 64, 1 kW floor cans

8 x Source four zoom profiles 750 W 15-30 degrees

4 x DTS Scena Fresnel 1 kW

6 x DTS XR9 Moving Head Spot 575 W (Fixed positions)

4 x DTS Blinders 2 lite

4 x Martin Atomic 3000

Common LEE gels, all necessary cables, couplers, etc.

Smoke:

Le Maitre MVS Hazer (can run both stand alone or on four DMX channels)

Stage:

Stage: 12 m wide and 4,5 front to back depth, with a 2 x 8 m “add on”

Raised 1 m above audience. Clearance 4,35 m.

Max. Load on floor is 250 kg/ 3,5 cm² or 350 kg/m²

Max. Load hanging from roof is 750 kg/m²

Power:

Light:

3 x 63 A/400 V CEE, 4 x 16A/230V CEE

Sound:

2 x 32 A/400 V, 1 x 16A/400 V

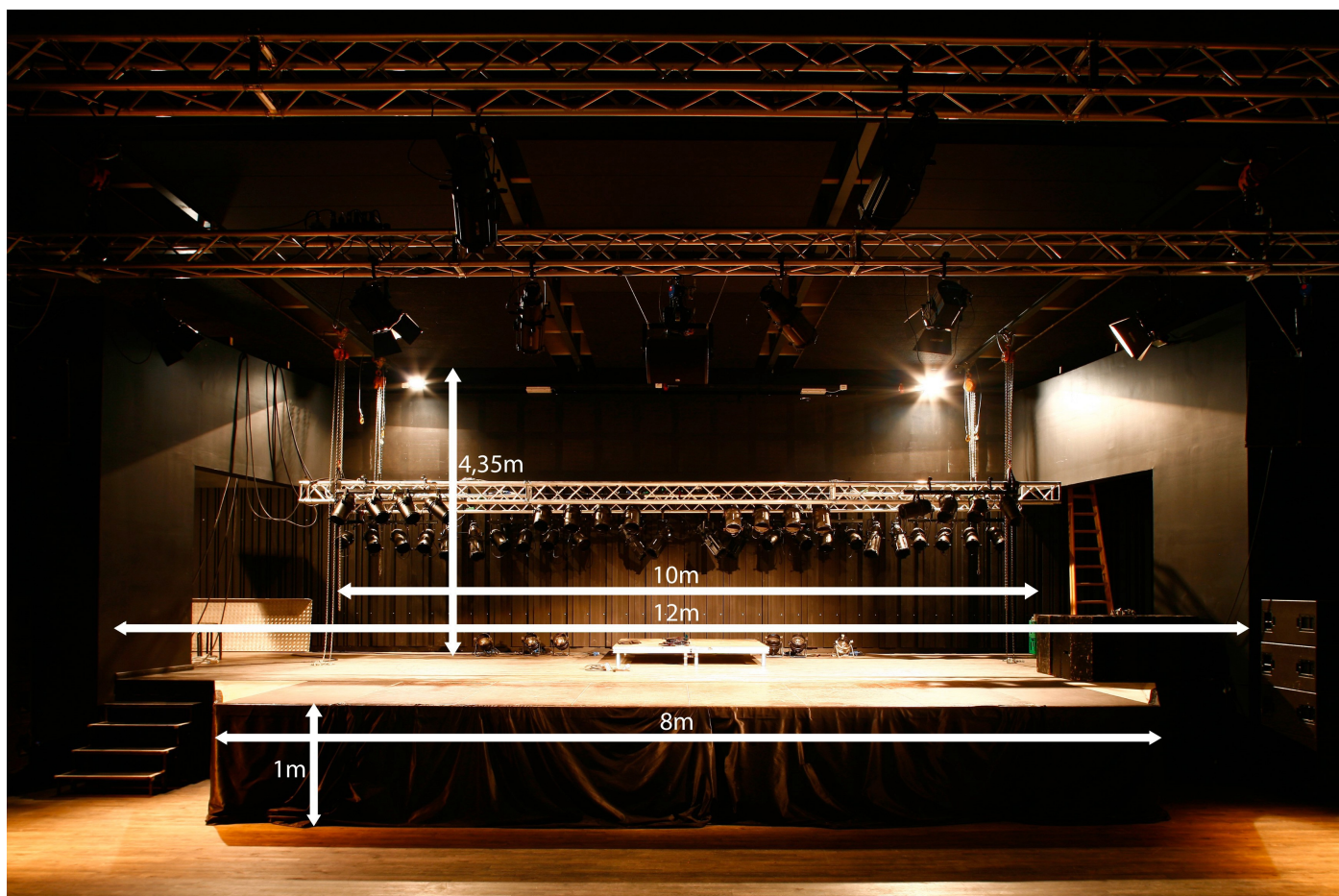
Backline:

12 x 16A/230 V CEE,

2 X 16A/115V CEE (sharing one 10A fuse)

Risers:

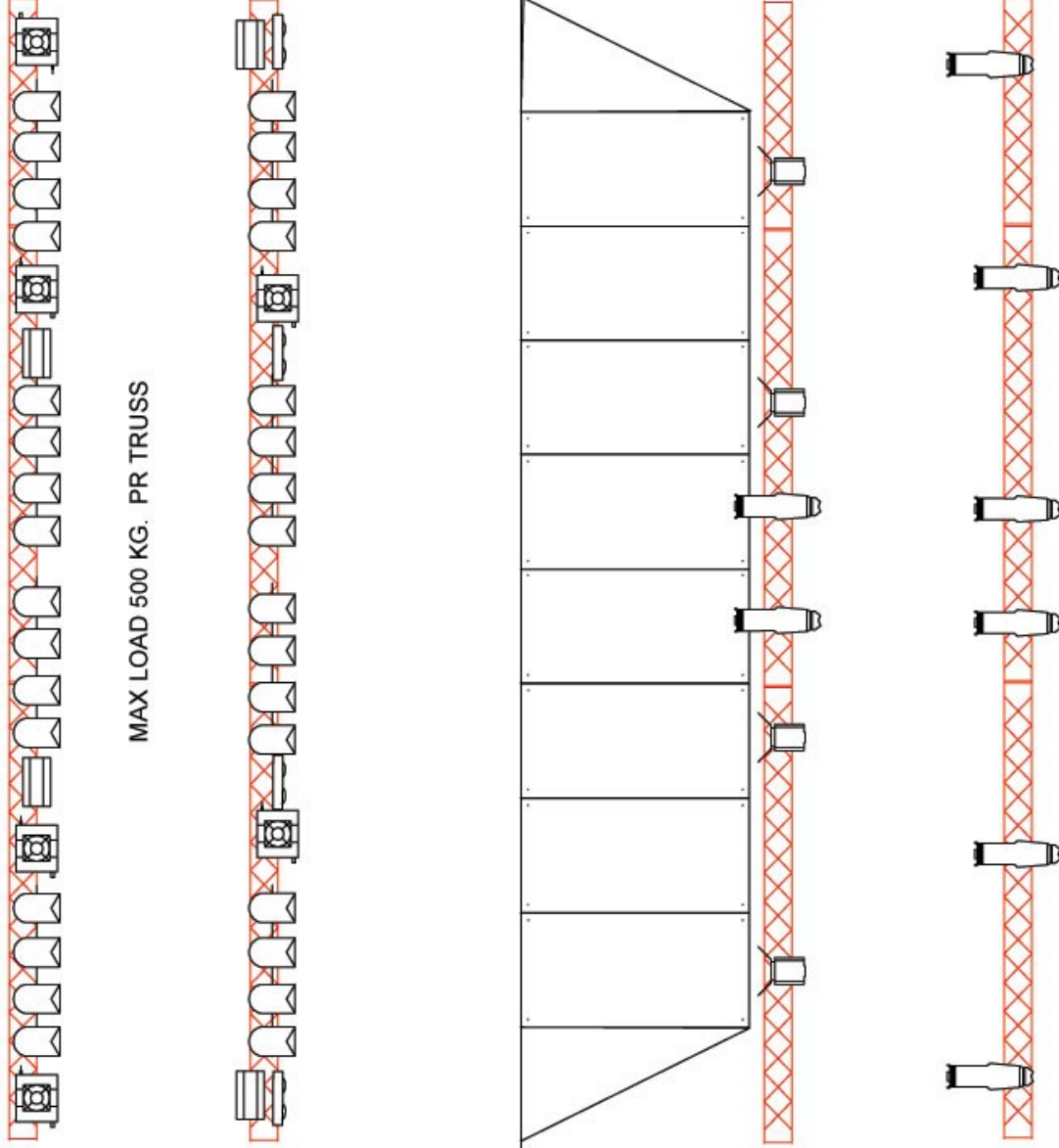
Six 1x2 m with heights of either 30 cm (11,81 in) or 40 cm (15,75 in)



<<- LOAD IN

BACK STAGE ->>

MAX LOAD 500 KG. PR TRUSS



NOTES

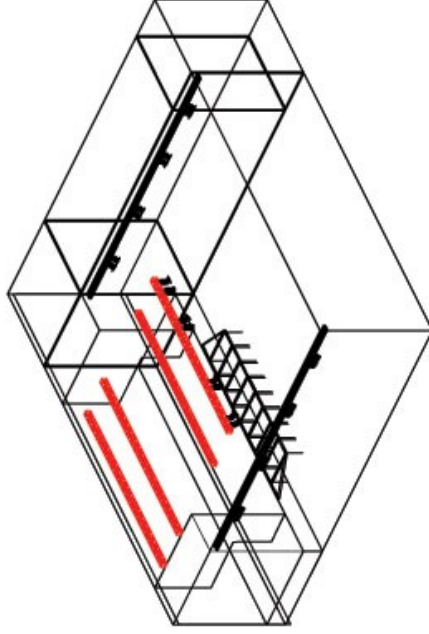
General

- All fixtures to have safety chains
- Opto splitters to be supplied where necc
- termination on all DMX
- Lemaitre MVS Hazer
- ALL light is Patch 1 - 1
- 4 DMX lines from FOH - Stage Left
- Avolites Pearl
- Call for Patch plan !!

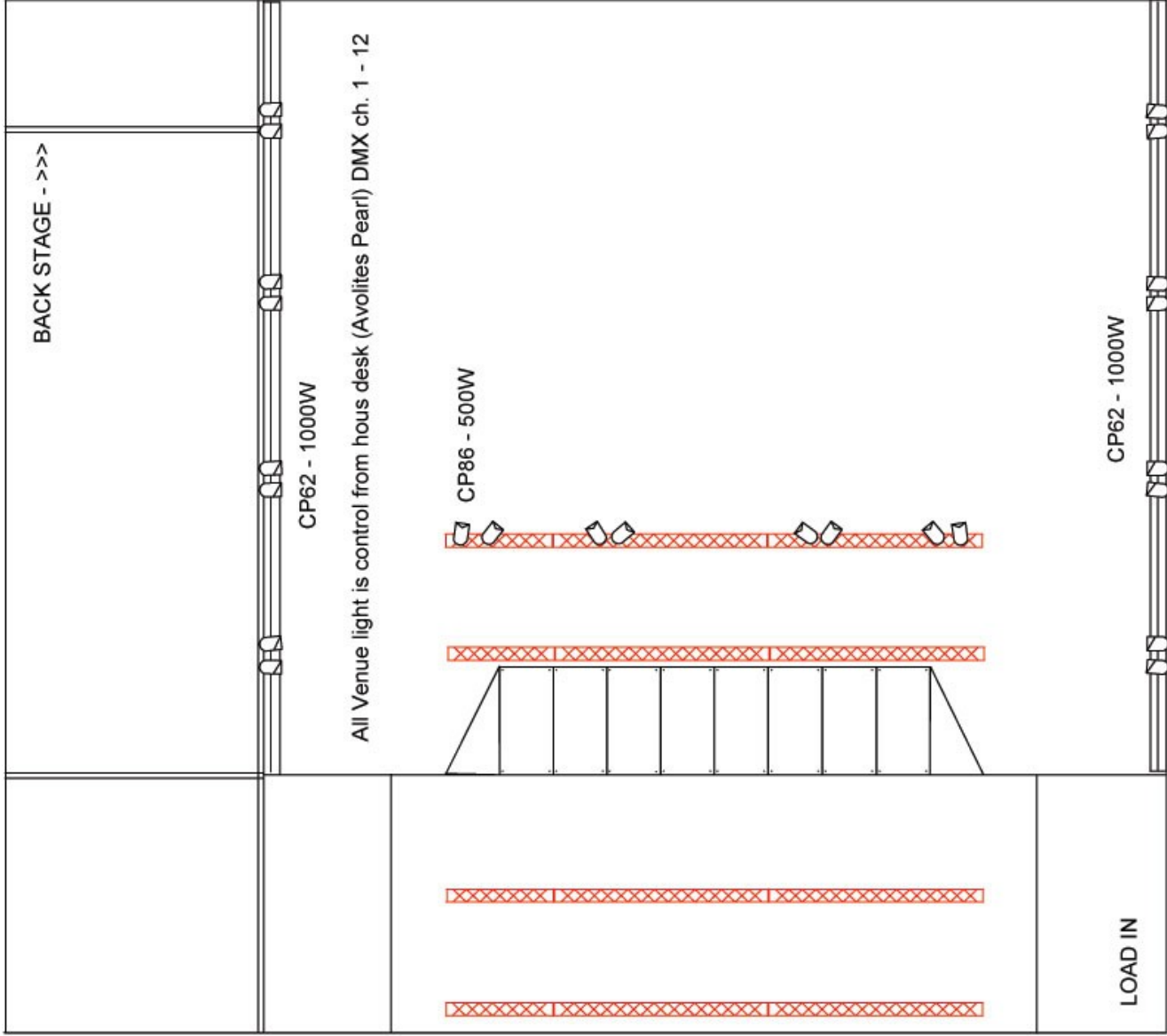
Lighting Gear

- 6 pcs. DTS XR-9 575W SPOT
- 32 pcs. Par64 CP-60
- 4 pcs. Martin Atomic 3000
- 4 pcs. 2 Lits Blender (DWE)
- 4 pcs. 1 kw. Fresnell
- 8 pcs. S4 15-30G zoom profil 750W

Posten Odense	
Lighting Design:	Christian Vigso www.christian-vigso.dk
	+45 - 40437551
Venue:	Posten
Zero Date:	
Printed:	26-5-2009 19:32
Printed By:	New Way
	File Posten.venue



Posten Odense	
Lighting Design:	Christian Vigso www.christian-vigso.dk +45 - 40437551
Venue:	Posten
Zero Date:	Printed: 28-5-2009 19:45 Printed By: New Way File: Posten.venue



Backline:

We do not have full backline available. Neither do we have an inventory of strings, batteries, sticks, etc. There is a large musical equipment store in town, look it up at: www.aage.dk

On each side of the stage there is placed trashcans and separate dispensers for dead batteries. Please be kind to use these instead of the floor or in a corner somewhere.

Our duck tape is placed in dispensers on each side of the stage.

Level of sound:

We do not have certified measuring equipment. But keep it real!

Our experienced house technicians will be monitoring the system to make sure it is not overloaded. We do want to have a fully functional system for the show the day after. Therefore it's important that you follow any instructions given to you by our house technician.

We do not tolerate any misuse or abuse of our equipment, including microphones, stands, etc.

Have a great show!